

# PROMESS

## UltraPRO Technology

### Mutli-axis motion control and sensing platform

Promess UltraPRO Technology is a multi-axis motion control and sensing platform designed to be used in conjunction with one or more of Promess' Electro-Mechanical units. Its multi-axis, multi-sensor capability makes it ideal for your pressing and torquing applications that require more than one axis of motion and/or multiple sensors to perform the operation. Scalable to fit your application, Promess' new UltraPRO Technology will help you solve your toughest assembly applications.

#### Features/Capabilities

- Multi-axis
- Multi-sensor
- Plug and play system
- Auto calibration
- EtherCAT networking
- Scalable, expandable platform
- Modular system
- Extensive software platform
- Easy to use powerful programming tools
- Powerful data analysis capability
- Flexible data collection options



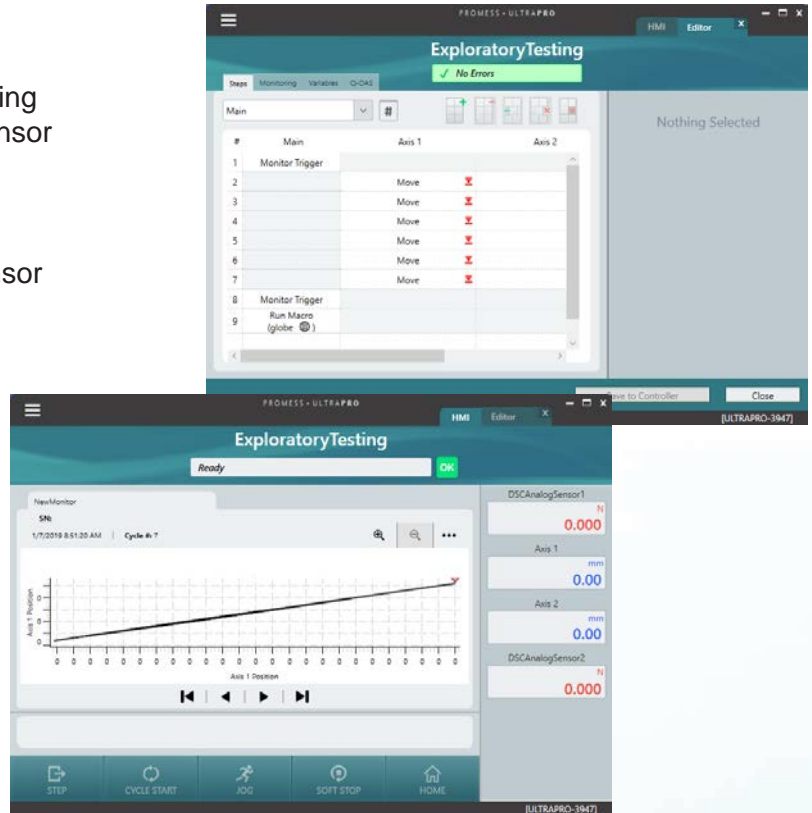
#### Digital Signal Conditioner

- 2x precision analog inputs
- 2x encoder inputs
- Automatic sensor recognition
- EtherCAT networking
- Data acquisition
- Auto calibration
- Digital interface
- USB service connection



## Easy menu driven software includes:

- Rapid application development using powerful commands:
  - Motion control
    - Move to position/angle
    - Move to force/torque
    - Move to an external signal
    - Move to a rate of change
    - Move to a compensation factor
  - Data acquisition and signature monitoring
    - Acquire force, position, angle or sensor versus time or distance
    - Fixed high and low limits
    - Reference curve limits
    - Gauge force, position, angle or sensor
    - Pass / fail outputs
  - Data storage
  - Custom commands
  - Custom formulas
- Program debugging aids
- Hardware diagnostics screen
- Manual jog screen
- Controller event logging
- Visualization of:
  - Signature curves
  - Gauge values
  - Live force, position, angle and sensor readings
  - Part Status (OK/NOK)
  - Faults and events
- Maintenance-free HMI
  - No virus scanners needed
- Complete visualization of one or multiple UltraPROs
- Multiple HMIs may be connected to one UltraPRO simultaneously



## Data Service

### Promess Database Utility

- Provides total data recall of signatures and gauge values
- Works with Promess Database produced from any Promess product
- Remote viewing using:
  - Microsoft file sharing
  - Dropbox
  - Microsoft SkyDrive
  - USB drives
- Overload graphs
- Data filtering

### Promess Data Service

- Easy set up
- Promess data storage
  - Signature curve
  - Calculated and gauged values
- Server-level software
- Continuous and reliable storage
- Plug-in architecture:
  - Promess database
  - Q-DAS
  - Quality WorX
  - Custom storage solutions
- Windows 7, Windows 8, Windows Server 2008 compatible
- Serial number tracking