

PROMESS

Promess MotionPRO Software

MotionPRO Flexible System Configurations

Promess software solutions offer a very high level of flexibility allowing our customers to configure the system solution to fit their process requirements.

There are four basic components that make up the Promess software package. The editor which is used to create the setup and programs, the HMI components for local viewing and the Data Service for collecting and the Database Viewer to recall. These software components can be used individually (remotely or locally) or in conjunction with each other as required.

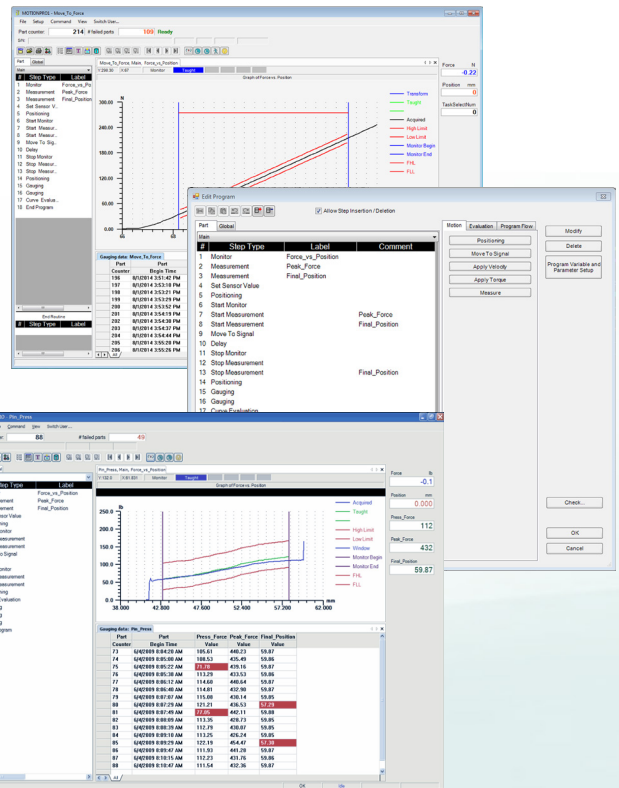
MotionPRO Editor

Easy menu-driven software includes:

- Rapid application development using powerful commands:
 - Motion control
 - Move to position/angle
 - Move to force/torque
 - Move to an external signal
 - Move to a rate of change
 - Move to a compensation factor
 - Data acquisition and signature monitoring
 - Acquire force, position, angle, or sensor versus time or distance
 - Fixed high and low limits
 - Learned signature limits
 - Editable signature limits
 - Gauge force, position, angle, or sensor
 - Pass/fail outputs
 - Data storage
 - Looping and branching
 - Custom commands
 - Formulas
 - Real-time formula evaluation [aka, live expressions]

Interface / Fieldbus Options:

- EtherNet I/P
- Profibus
- ProfiNet
- ModBus TCP
- Discrete I/O



Easy menu-driven software also includes:

- Program debugging aids
- Online and offline editing supported
- Cut and paste
- Editing history logging
- Multi-user access control
- Hardware diagnostics screen
- Parameter setting screen
- Manual jog screen
- Controller event logging



Laptop

11429 Grand River Road • PO Box 748 • Brighton, Michigan 48116-9547 • 810-229-9334 • FAX 810-229-8125

promess@promessinc.com • www.promessinc.com

Copyright © Promess Incorporated. All rights reserved

MotionPRO Software

MotionPRO HMI

- Visualization of:
 - Signature curves
 - Gauge values
 - Live force, position, angle, and sensor readings
 - Part status (OK/NOK)
 - Faults and events
- Parameter setting screen
- Manual jogging screen
- Maintenance-free HMI
 - No virus scanners needed
- Complete visualizations of one or multiple MotionPROs
- Multiple HMIs may be connected to one MotionPRO simultaneously
- Multilingual
- Windows CE, Windows 7 compatible



Windows HMI

MotionPRO Data Service

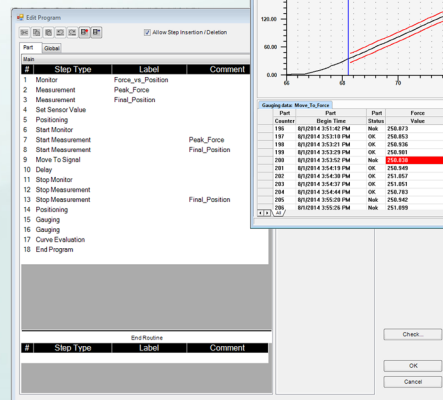
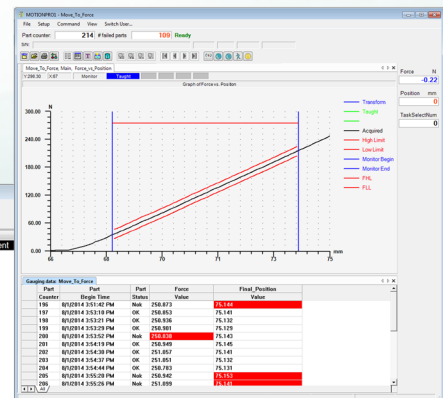
- Automatic connection with all MotionPRO's online
- Interface with additional database software & storage
- Data direct from controller
- Storage to Microsoft SQL database files
- Customer data plug-in development service
- Automatic in-stream archiving
- Collects data from multiple Promess systems
- Easy-to-use GUI tool for configuring the Data Service
- Works independently of Editor and HMI Software
- Windows 7, Windows 8, Windows Server 2008r2, Windows Server 2012r2 compatible



Remote Server

MotionPRO Database Viewer

- Provides total data recall of signatures and gauge values
- Works with Promess Database produced from any Promess product
- Remote viewing using:
 - Microsoft file sharing
 - Dropbox
 - Microsoft SkyDrive
 - USB Drives
- Data recall features:
 - Recall monitored graphs
 - Overlaid graphs
- Recall gauged values in spreadsheet form
- Exports data to Excel
- Offers data filtering and searching



The screenshot shows a software window titled 'Edit Program'. It features a table with columns for 'Step Type', 'Label', and 'Comment'. The table contains multiple rows of data, with some cells highlighted in red. Below the table, there are buttons for 'Check', 'OK', and 'Cancel'.