



CORPORATE **BROCHURE**

Promess provides complete
solutions for your monitoring,
motion and testing needs.



PROMESS



EMAP

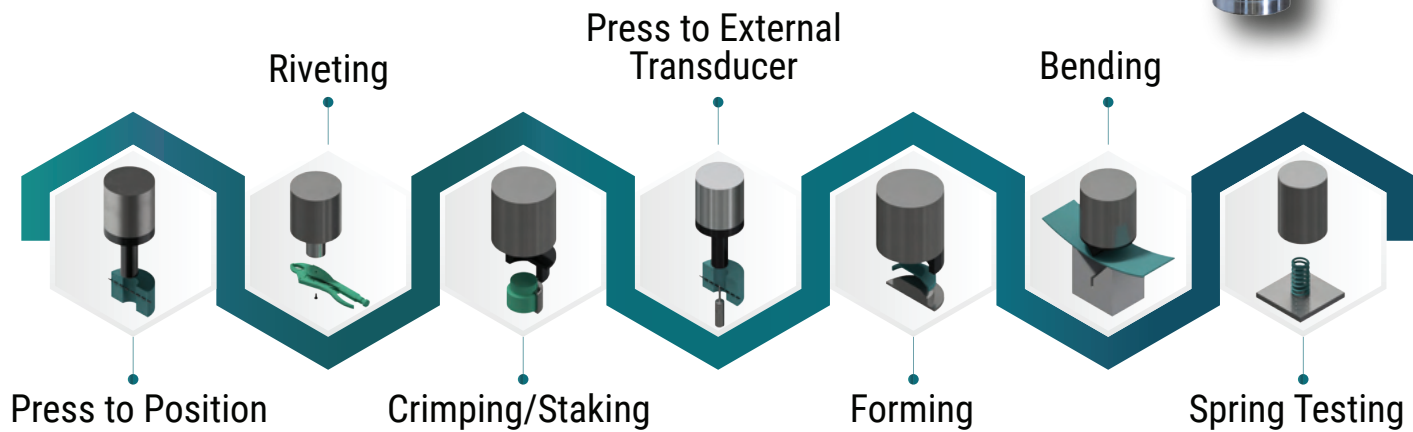


The Promess Electro-Mechanical Assembly Press (EMAP) combines our electric ball screw press technology with our motion control system to provide a high precision, closed-loop press solution.



Monitoring & Test Capabilities:

- + Force vs. position signature monitoring with advanced curve analysis
- + Customized algorithms



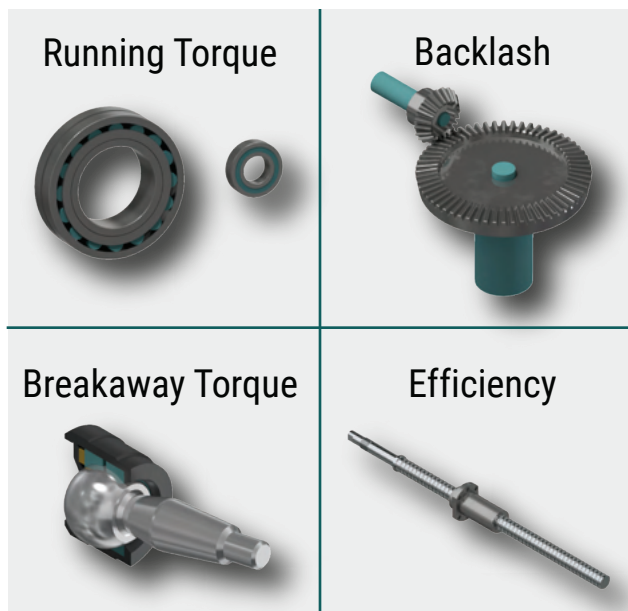
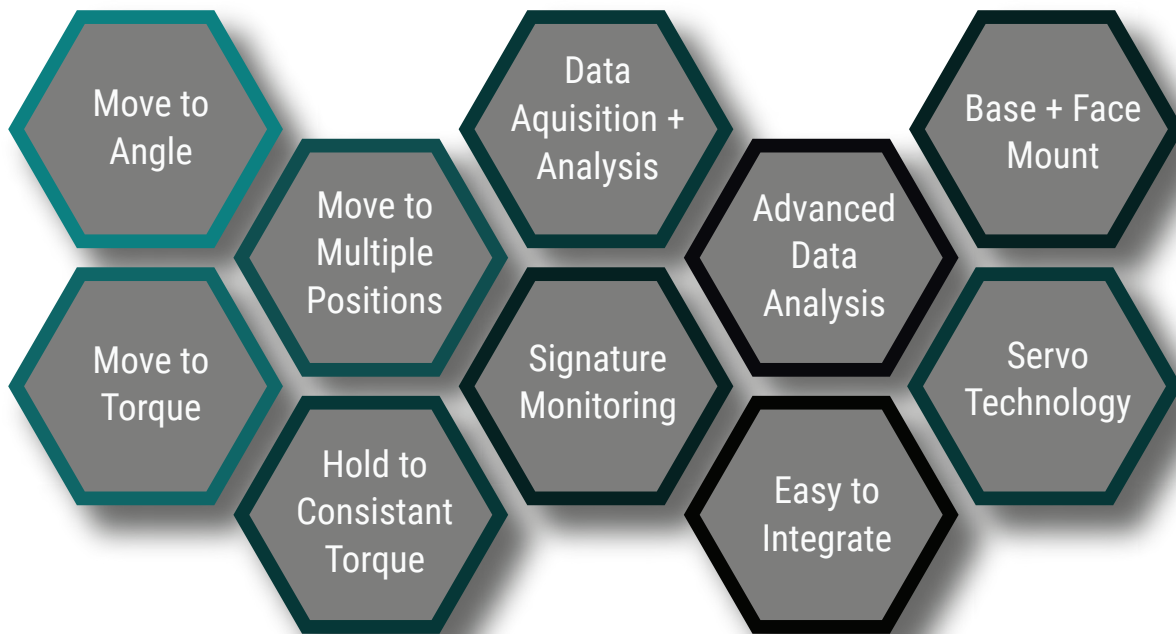
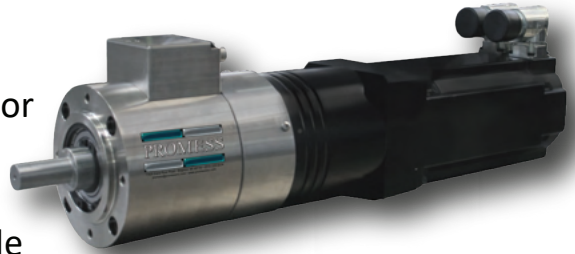
EMAP Sizes ⁺	Force		Travel		Speed
	kN	Lbs	mm	inch	mm/sec
EMAP 0.2kN	0.2	45	100	3.9	200
EMAP 01kN	1	225	100/300	3.9/11.8	200/150
EMAP 03kN	3	675	100/300	3.9/11.8	200
EMAP 05kN	5	1,125	200/350	8/13.8	200
EMAP 08kN	8	1,800	200/350/500	8/13.8/19	200
EMAP 12kN	12	2,700	200/350/500	8/13.8/19	200
EMAP 20kN	20	4,500	180/350/550	7/13.8/21.6	200
EMAP 30kN	30	6,750	180/350/550	7/13.8/21.6	200
EMAP 40kN	40	9,000	330/660	13/26	200
EMAP 60kN	60	13,500	330/660	13/26	200
EMAP 80kN	80	18,000	330/660	13/26	175
EMAP 100kN	100	22,500	330/660	13/26	200
EMAP 120kN	120	27,000	330/660	13/26	175
EMAP 160kN	160	36,000	400	15.75	125
EMAP 200kN	200	45,000	400	15.75	100
EMAP 300kN	300	67,500	400	15.75	100
EMAP 500kN	500	112,000	400	15.75	70
EMAP 1,000kN	1000	225,000	400	15.75	40

+ Other sizes, stroke lengths and speeds available

TorquePRO



Promess TorquePRO System combines a servo motor and torque transducer in a single plug-and-play package. TorquePRO Systems have the ability to control and monitor the rotational torque and angle of your process. It is designed to fit a broad range of functional torque testing and measurement applications.



Torque Capacity		Speed
Nm	Lbs-In	RPM
5	44	250
20	177	250
50	442	250
100	885	250
200	1,770	250
500	4,425	100
1,000	8,851	75
2,500	22,127	20
5,000	44,254	10
10,000	88,507	4

+ Other sizes available

REMAP



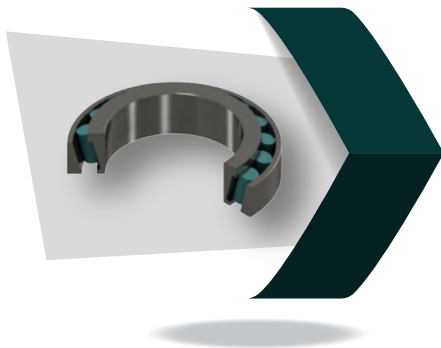
The Promess Rotational Electro-Mechanical Assembly Press (REMAP) combines independent linear and rotational motion in a single unit. The REMAP system has integrated force and torque sensors for controlling and monitoring every aspect of your process.

REMAP Sizes		Linear Axis		Rotational Axis	
Force (kN)		Stroke (mm)	Speed (mm/sec)	Torque (Nm)	Speed (RPM)
REMAP 1kN		100	200	20/50/100	250
REMAP 5kN		200	200	20/50/100/200	250
REMAP 12kN		400	200	20/50/100/200	250
REMAP 20kN		400	200	20/50/100/200	250
REMAP 30kN		400	175	20/50/100/200	250
REMAP 40kN		400	200	20/50/100/200	250
REMAP 60kN		400	150	20/50/100/200	250

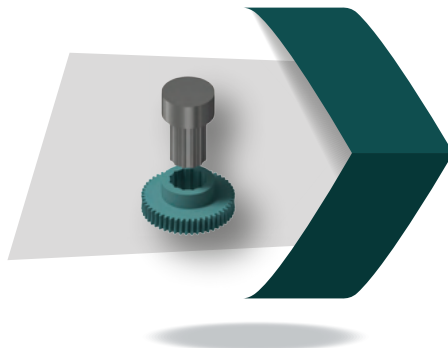
+ Other sizes, stroke lengths and speeds available



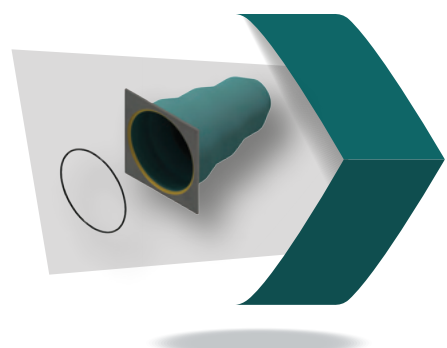
Bearing Pre-Load



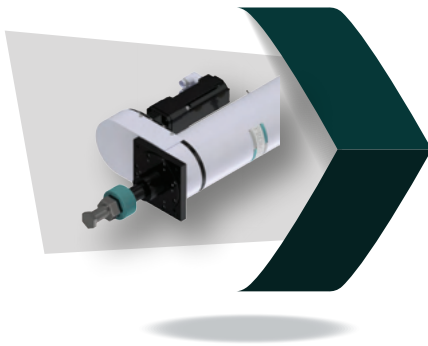
Spline Alignment + Press



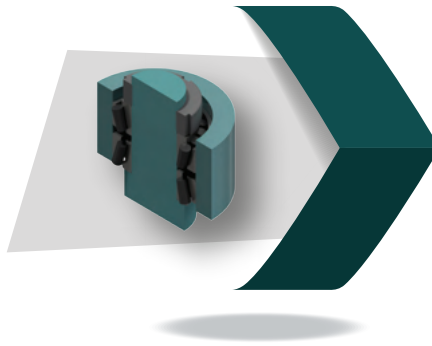
Seal Pressing



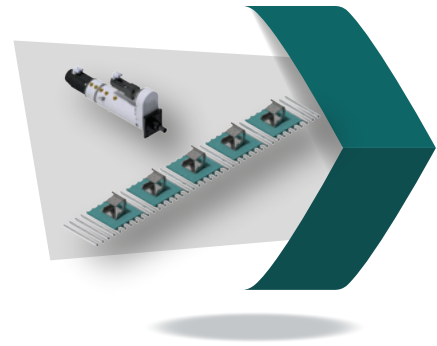
Assemble to Torque



Bearing Lash Adjustment



Self-Actuating Torque Test



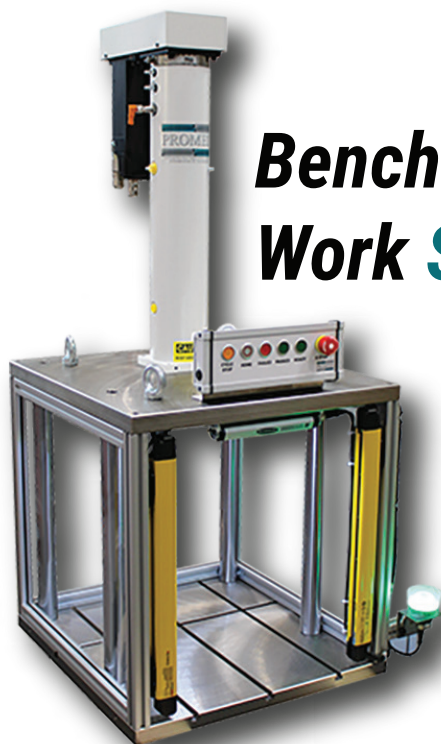
Work Station



The Promess Work Station is a stand-alone system featuring a Promess motion controller and either a Promess Electro-Mechanical Assembly Press (EMAP), a TorquePRO motorized torque system or a Rotational Electro-Mechanical Assembly Press (REMAP), depending on application requirements. The Work Station provides a flexible foundation for use in production, test and lab applications.

Electric Press Work Stations Include:

- + Promess servo press
- + Promess motion controller
- + Force transducer
- + Press stand with C-frame or 4-post frame
- + Light curtain for operator safety
- + Programming software



Benchtop Press Work Station

Controllability

- + Integrated with EMAP, REMAP or TorquePRO
- + Simple Programming
- + Position Sensing
- + Force Feedback

Scalability

- + Standard Station sizes with short lead times
- + Easily add capacity to any production scenario
- + Repurpose as production numbers scale down

***PROMESS* PROCESS DEVELOPMENT CENTER**



Promess would like to invite you to our Process Development Center. The PDC is available to help you develop your processes and confirm the Promess technology that is best suited for your application. In addition to in-person testing, you are also encouraged to send in your parts to be tested by our expert Application Engineers.

***PROMESS* WORLD WIDE SERVICE + SUPPORT**



11429 Grand River Road, Brighton, MI 48116 | 810-229-9334 | promessinc.com | promess@promessinc.com
Copyright © Promess Incorporated All Rights Reserved