



# TorquePRO **BROCHURE**

Promess motorized torque assembly & test systems are the ideal solution for your torque testing and assembly needs

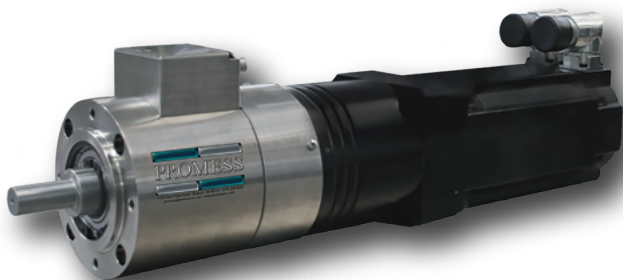
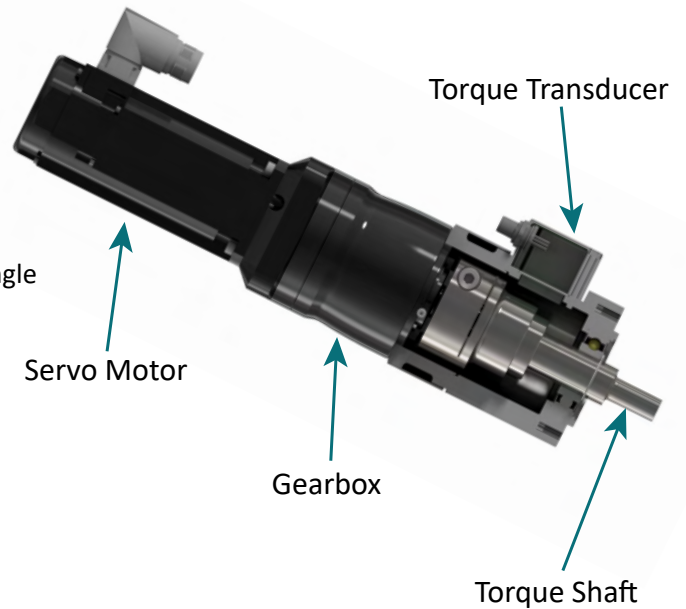


# TorquePRO

The Promess TorquePRO is a rotational actuator that can control and monitor the torque and angle of a process. It is a fully electric and programmable system that can be used for various torque testing and assembly applications.

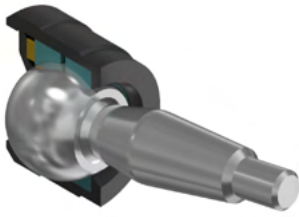
## FEATURES/CAPABILITIES:

- + Torque and angle monitoring using Promess patented DABEX
- + Data acquisition and analysis
- + Use standard monitoring functions or create your own with the DABEX curve analysis tools
- + Compact design
- + Move to programmable torque or programmable angle
- + Hold a constant torque
- + Advanced data analysis
- + Easy to integrate



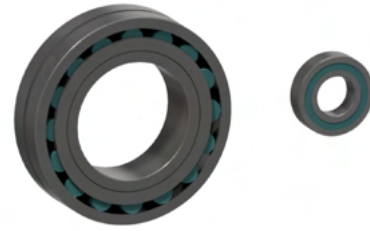
Torque Capacity		Speed
Nm	Lbs-In	RPM
1	9	250
5	44	250
20	177	250
50	442	250
100	885	250
200	1,770	250
500	4,425	100
1,000	8,851	75
2,500	22,127	20
5,000	44,254	10
10,000	88,507	4

# SAMPLE APPLICATIONS



## **BREAKAWAY TORQUE:**

- + Rotate at a programmable speed
- + Monitor torque and angle
- + Capture and analyze maximum torque during breakaway
- + Ensure breakaway torque is within specified limits
- + Calculate delta between breakaway torque and running torque



## **RUNNING TORQUE:**

- + Rotate at a programmable speed
- + Monitor torque and angle
- + Ensure running torque is within specified limits



## **EFFICIENCY:**

- + Rotate at a programmable speed or torque
- + Measure input torque and output torque
- + Calculate and gauge efficiency at different speeds or torque values



## **STATIC OR DYNAMIC BACKLASH:**

- + Apply programmable torque in CW and CCW directions
- + Measure clearance or lost motion in rotational assembly
- + Monitor to display actual lash visually



## **BEARING LASH ADJUSTMENT:**

- + Apply initial torque to nut
- + Adjust nut torque to achieve desired bearing lash
- + Gauge lash
- + Gauge torque and angle



## **ASSEMBLE TO TORQUE:**

- + Verify thread alignment to prevent damage
- + Apply programmable torque
- + Gauge torque and angle

# WORK STATION

The Promess Work Station is a stand-alone system featuring a Promess motion controller and either a Promess Electro-Mechanical Assembly Press (EMAP), a TorquePRO motorized torque system or a Rotational Electro-Mechanical Assembly Press (REMAP), depending on application requirements. The Work Station provides a flexible foundation for use in assembly, test and lab applications.

## ***Electric Press Work Station Includes:***

- + Promess servo press with integrated force and position feedback
- + Promess motion controller
- + Press stand with C-frame or 4-post frame
- + Light curtain for operator safety
- + Programming software



# PROCESS DEVELOPMENT CENTER



Promess would like to invite you to our Process Development Center. The PDC is available to help you develop your processes and confirm the Promess technology that is best suited for your application. In addition to in-person process development, you are also encouraged to send in your parts to be proved out by our expert Application Engineers.



11429 Grand River Road, Brighton, MI 48116 | 810-229-9334 | [promessinc.com](http://promessinc.com) | [promess@promessinc.com](mailto:promess@promessinc.com)  
Copyright © Promess Incorporated All Rights Reserved